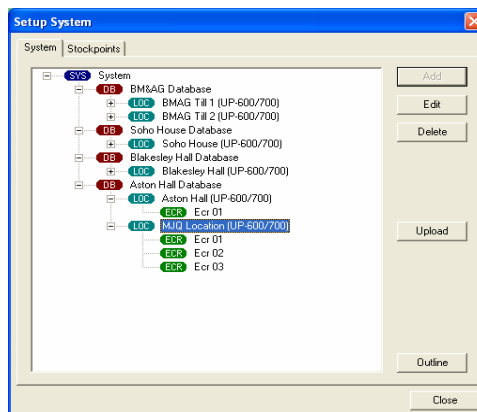




Unit 11, Metropolitan Business Park,
Metropolitan Drive, Off Preston New Road,
Blackpool, Lancashire, FY3 9LT.
Telephone: (01253) 838000, Facsimile: (01253) 832630
E-Mail: sales@norcash.co.uk Website: www.norcash.co.uk

Sharpsoft ECR Manager for Windows Features.

System Structure



- One or more databases can be created.
- Each database has one or more locations.
- Each location has one or more ecrs.
- Different ecr models can be used on each location.
- Locations can be local or remote.
- Locations can be standalone, master/slave or consolidated master.
- One or more sites can be linked to each database.
- One or more stockpoints can be linked to each site.
- All stock data is held at the stockpoint level.
- Stockpoints can be consolidated for reporting or ordering at a site or database level.
- Simultaneous multi-user access for data entry and reporting.
- Read only access for the Databases while another user is editing to avoid replication of entered data.

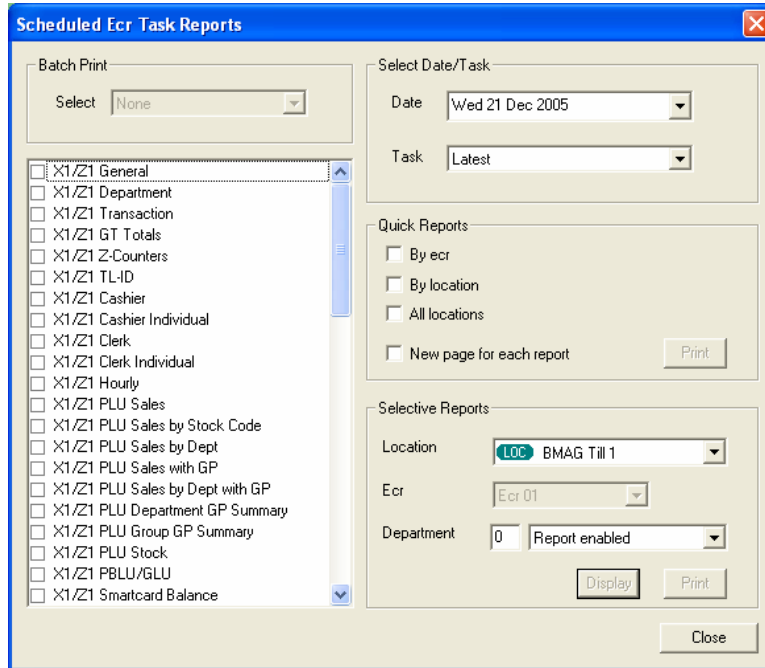
Database Features

- Each database has a unique list of plu items.
- The plu items are shared by all the locations and ecrs on the database.
- Department information can be entered by database or globally.
- Tax and Exchange rate information can be entered by database or globally.
- Condiment and Mix Match tables can be entered for each database.
- All of the above can be downloaded to or uploaded from an ecr network.
- Function, Group and GT texts can be entered for reporting purposes.

Plu Editing Features

- Plu items can be uploaded from an ecr for editing on the PC.
- Plu items can be imported from or exported to a CSV file.
- Prices, Profit Margins and Programming can be set by range.
- Price List and Programming reports can be created from the PC.
- Items can be added or deleted by range.
- Items can be filtered by plu number or description.
- Full support for plu unit pricing.
- Apparent stock option allows stock level to be tracked for each plu.

POS Reporting Features



- Reports can be exported in CSV format.
- Comprehensive range of ecr reports.
- View sales by plu item, department or stock code.
- Reports can be consolidated by ecr, location or database.
- Report points can be created to consolidate ecrs from different locations.
- Batch printing option for ecr reports.
- Sales history report for plu and department sales within a date range.
- Plu sales history graphs.
- Apparent stock reports by plu and department.
- Preset configurations can be created for the Plu, Department and Stock sales history to save time when requesting reports.
- Plu and Stock sales history reports can be sorted by the department or category that the items are currently linked to or by the department or category at the time of sale.
- Stock database custom list report showing selected database fields and apparent stock level.
- Option to omit the page break after each report when printing results for the same Ecr job at different consolidation levels.

