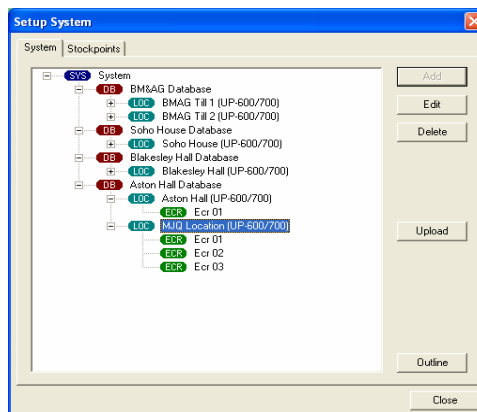




Unit 11, Metropolitan Business Park,  
Metropolitan Drive, Off Preston New Road,  
Blackpool, Lancashire, FY3 9LT.  
Telephone: (01253) 838000, Facsimile: (01253) 832630  
E-Mail: [sales@norcash.co.uk](mailto:sales@norcash.co.uk) Website: [www.norcash.co.uk](http://www.norcash.co.uk)

## Sharpsoft Stock Manager for Windows Features.

### System Structure



- One or more databases can be created.
- Each database has one or more locations.
- Each location has one or more ecrs.
- Different ecr models can be used on each location.
- Locations can be local or remote.
- Locations can be standalone, master/slave or consolidated master.
- One or more sites can be linked to each database.
- One or more stockpoints can be linked to each site.
- All stock data is held at the stockpoint level.
- Stockpoints can be consolidated for reporting or ordering at a site or database level.
- Simultaneous multi-user access for data entry and reporting.
- Read only access for the Databases while another user is editing to avoid replication of entered data.

# Database Features

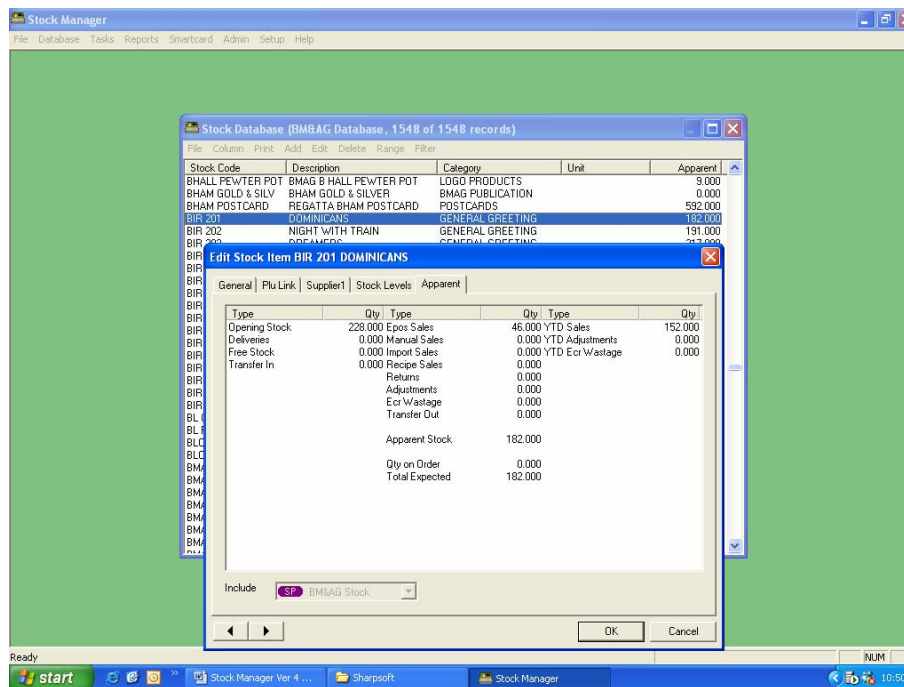
Plu Number	Description	Stock Code	Dept	Pric1	Pric2	Type	Tax
00000000000001	REGATTA BHAM POSTCARD	BHAM POSTCARD	29	0.51	0.00	Preset	3
00000000000002	BHMAG POSTCARDS	BHMAG POSTCARDS	29	0.60	0.00	Preset	3
00000000000003	EMBLEM FROST BOX SHARPENER	STYF00400	21	0.80	0.00	Preset	3
00000000000004	EMBLEM ICE PEN	PENF00250	21	0.70	0.00	Preset	3
00000000000005	EMBLEM HOLOGRAM PENCIL	PLCF00500	21	0.50	0.00	Preset	3
00000000000006	EMBLEM MESH WALLET	NLYF00200	21	2.50	0.00	Preset	3
00000000000007	EMBLEM HONEY 5th TEDDY	BEAF00200	21	2.50	0.00	Preset	3
00000000000008	EMBLEM FROSTED PENCIL CASE	STYF00375	21	1.50	0.00	Preset	3
00000000000009	EMBLEM OPTICAL LENSE K/R	KRGF00275	21	1.50	0.00	Preset	3
00000000000010	EMBLEM ICE CUBE K/R	KRGF00225	21	1.50	0.00	Preset	3
00000000000011	WESTARP QUILL LODGE	QUILL	22	1.00	0.00	Preset	3
00000000000012	FROSTED NOTEPAD	FROSTED NOTEPAD	21	1.50	0.00	Preset	3
00000000000013	MIN IMPS SMALL MINERAL PIECES	SML MIN PIECES	40	1.00	0.00	Preset	3
00000000000014	MIN IMPS MEDIUM MINERAL PIECES	MED MIN PIECES	40	1.50	0.00	Preset	3
00000000000015	MIN IMPS KEYCHAINS	KEYCHAINS	40	2.50	0.00	Preset	3
00000000000016	INCOGNITO CARDS	INCOGNITO CARDS	26	1.95	0.00	Preset	3
00000000000017	LBANK GR CARDS	LBANK GR CARDS	26	1.95	0.00	Preset	3
00000000000018	NI CARDS	NI CARD	26	1.95	0.00	Preset	3
00000000000019	ICON CARD	ICON CARD	26	1.60	0.00	Preset	3
00000000000020	N.I. FOLDED CARDS	FOLDED CARDS	26	1.35	0.00	Preset	3
00000000000021	MUS & GALL COUTURE CARDS	COUTURE	26	1.25	0.00	Preset	3
00000000000022	MUS & GALL COUTURE CARD	M&G COUTURE CARD	26	1.50	0.00	Preset	3
00000000000023	N.I. 30 X 30 POSTER	30X 30	16	5.50	0.00	Preset	3
00000000000024	BHMAG POSTER (SML)	BHMAG POSTER (SML)	16	3.00	0.00	Preset	3
00000000000025	M&G RECT CARD	M&G RECT CARD	26	1.95	0.00	Preset	3
00000000000026	M&G SQ CARD	M&G SQUARE CARD	26	1.95	0.00	Preset	3
00000000000027	ENORMOUS ART 30X 40 POSTER	30X40 POSTER	16	8.50	0.00	Preset	3
00000000000028	ENORMOUS ART 40X 50 POSTER	40X50 POSTER	16	10.00	0.00	Preset	3
00000000000029	ENORMOUS ART 60X 80 POSTER	60X80 POSTER	16	14.99	0.00	Preset	3
00000000000030	ENORMOUS ART 80X 70 POSTER	80X70 POSTER	16	12.99	0.00	Preset	3

- Each database has a unique list of plu items.
- The plu items are shared by all the locations and ecrs on the database.
- Department information can be entered by database or globally.
- Tax and Exchange rate information can be entered by database or globally.
- Condiment and Mix Match tables can be entered for each database.
- All of the above can be downloaded to or uploaded from an ecr network.
- Function, Group and GT texts can be entered for reporting purposes.

# Plu Editing Features

- Plu items can be uploaded from an ecr for editing on the PC.
- Plu items can be imported from or exported to a CSV file.
- Prices, Profit Margins and Programming can be set by range.
- Price List and Programming reports can be created from the PC.
- Items can be added or deleted by range.
- Items can be filtered by plu number or description.
- Full support for plu unit pricing.
- Apparent stock option allows stock level to be tracked for each plu.

# Stock Items

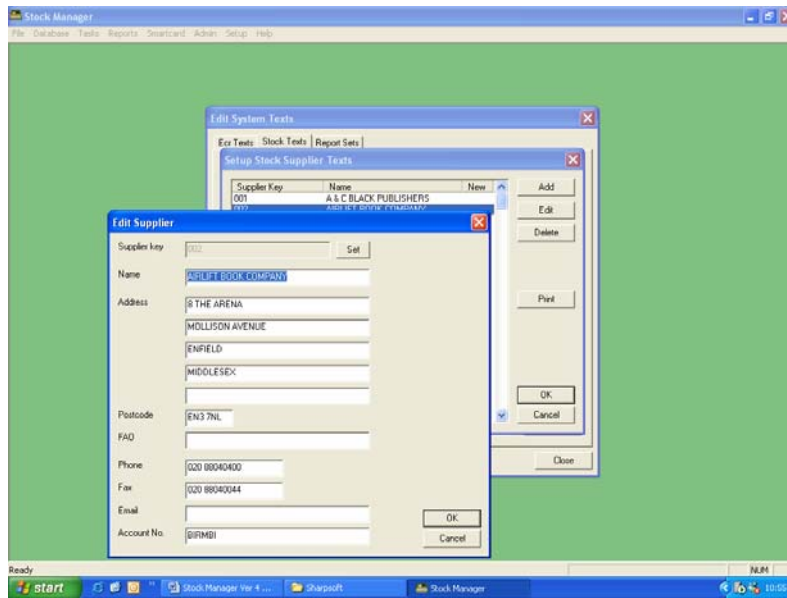


- Stock items are separate from plu items.
- Each item has a stock code and a description.
- Each item is assigned to a category.
- Support for named stock units and sub units.
- Support for automatic wastage.
- Recipe plu items can sell several stock items.
- Redirection allows several plu items to sell the same stock item.
- Each stock item may be linked to three suppliers.

## Stock Levels by Stock Item

- Opening Stock.
- Deliveries.
- Free Stock.
- Epos Sales.
- Manual Sales.
- Import Sales.
- Returns.
- Adjustments.
- Transfers.
- Minimum/Reorder.
- Closing Stock.
- YTD Sales.
- YTD Adjustments

# Suppliers

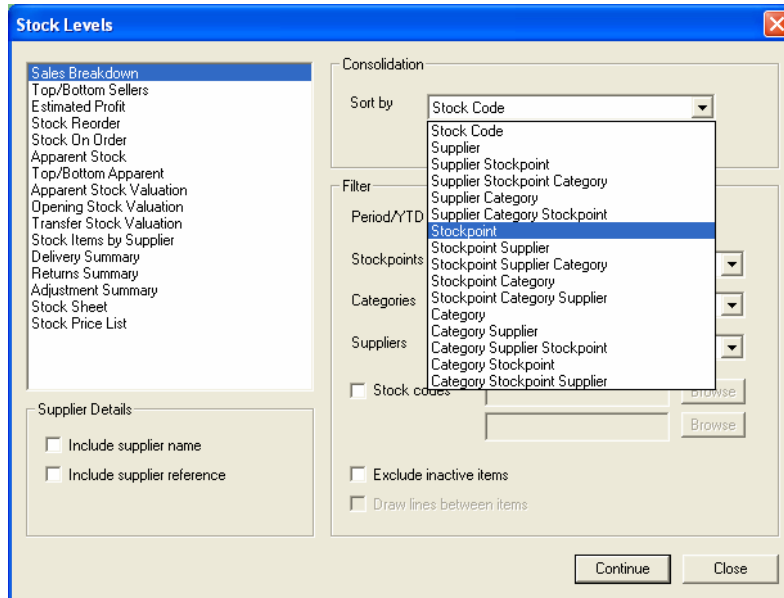


- Number of Suppliers limited only by disk space.
- Global list of suppliers for the stock system.
- Up to 5 Suppliers per Product can be assigned.
- Supplier name, address, telephone no., email details for order processing.

# Generating Stock Items

- Stock items can be generated to match existing plu items or whenever extra plu items are added.
- Stock items that are inactive and not linked to any plu items can be searched for and deleted.
- Stock codes for existing items can be changed.

# Stock Reports

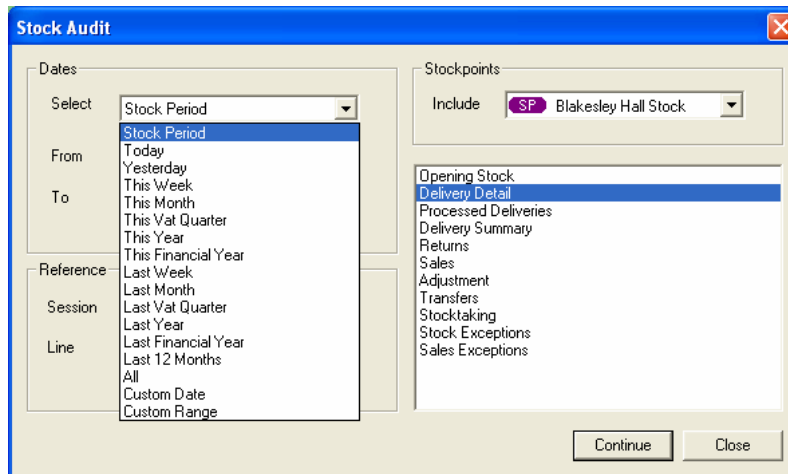


- **Sales Reports**
  - Report by date range.
  - VAT by Financial Year End.
  - Period Sales Breakdown
  - YTD Total Sales
  - Sales by Date
  - Top/Bottom 100 Items
  - Top/Bottom 100 Items by Date
- **Stock Level Reports**
  - Apparent Stock
  - Delivery Summary
  - Adjustment Summary
- **Valuation Reports**
  - Apparent Stock
  - Opening Stock
  - Closing Stock
  - Stock Transfers
- **Period End Reports**
  - Closing Stock Variance.
  - Closing Stock Reconciliation.
  - Closing Category Reconciliation.
  - Closing Cash Reconciliation.
- **Supplier Based Reports**
  - Stock On Order
  - Stock Reorder
  - Stock Item by Supplier
- **Other Stock Reports**
  - Stock Sheet

## Stock Report Options

- Single or multiple stockpoints.
- Separate or consolidated stockpoints.
- Single category or all categories.
- Sort by category.
- Category summary.
- Restrict to a range of stock codes.
- Sort by supplier.
- Show supplier details for each item.

# Stock Audit Reports



- Adhoc Deliveries
- Delivered Orders
- Adjustments
- Opening
- Closing
- Returns
- Sales
- Transfers
- Exceptions

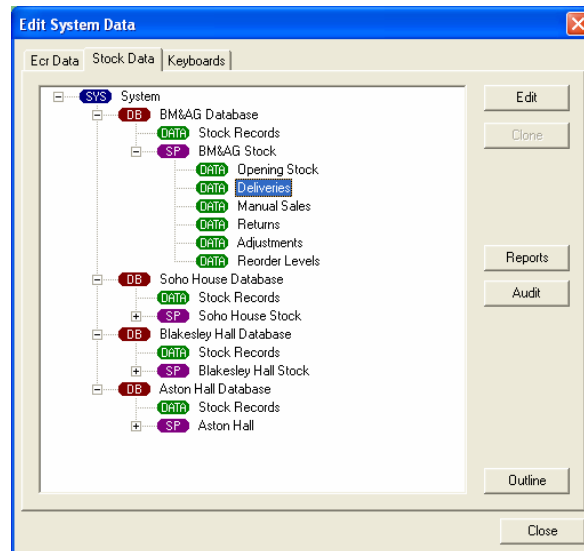
## Audit Report Options

- Single or multiple stockpoints
- Period or YTD for some reports
- Date range

## Entering Sales

- Automatic import from ecr network
- Assign each ecr to any stockpoint from the same database.
- Sales can be viewed before importing so that items that are not defined in the database may be added.
- Sales can be entered manually at the PC.
- Sales can be imported from a CSV file.

## Entering Deliveries



- Adhoc deliveries can be entered by plu number or stock code.
- Quantities can be specified by stock unit or delivery unit.
- Automatic estimation of delivery cost.
- Browse for items by supplier or across the whole database.
- Deliveries can be imported from a CSV file.
- Preview shows the effect of the deliveries on current stock levels.

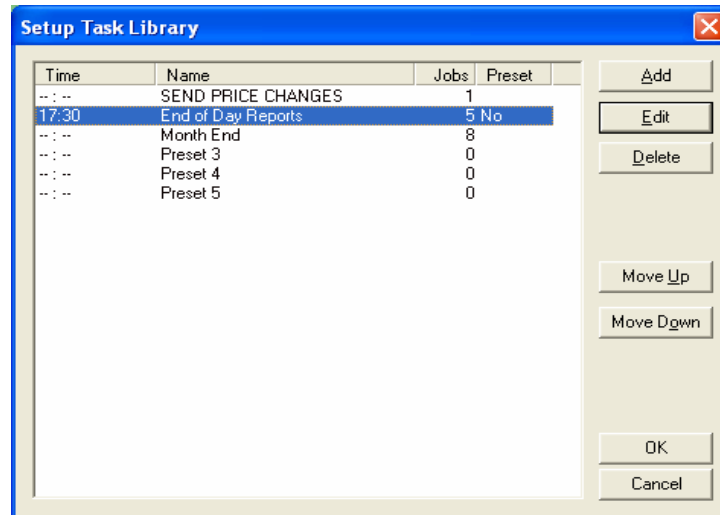
## Order Processing

- Orders can be generated from minimum stock levels or to replace sales for a specified date range.
- Orders can be previewed and edited before being forwarded for processing.
- Purchase orders can be printed or emailed directly to the supplier.
- Orders can be changed at any time before delivery.
- Orders can be split at delivery time to allow for partial delivery.

## Period & Year End

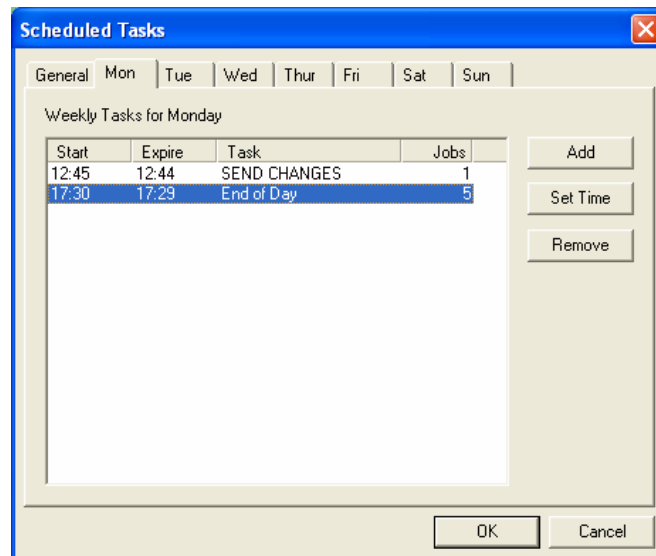
- Opening stock for the new period can be set from closing stock or apparent stock.
- YTD figures are maintained for Sales and Adjustments.
- Period End can be restricted to a single category.

# Scheduling Features



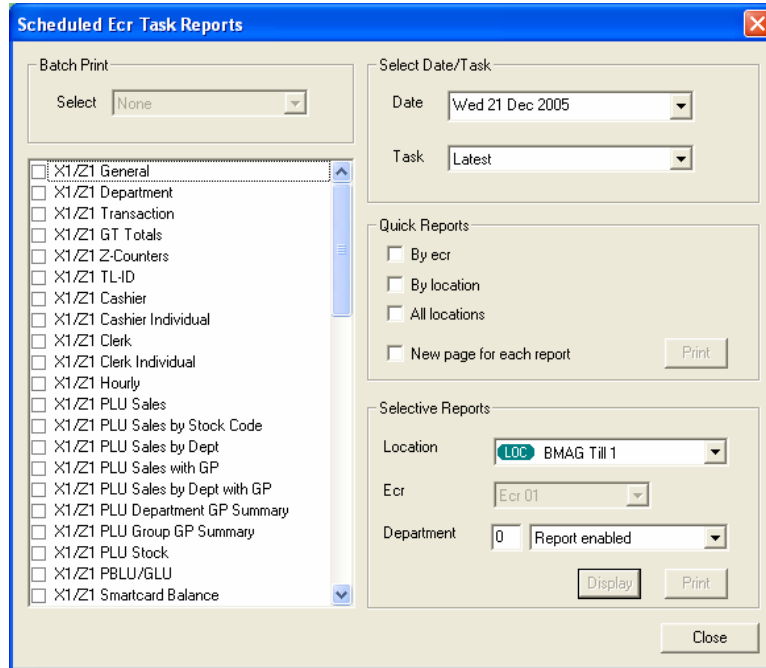
- Jobs can be started immediately or within the next 24 hours.
- Preset lists of jobs can be created with a specified start time.
- Auto Print facility allows batch printing of reports after each task.
- Reports can be displayed directly from the scheduler environment.
- Comprehensive logging of ecr communications.

## Scheduling Optional Extra

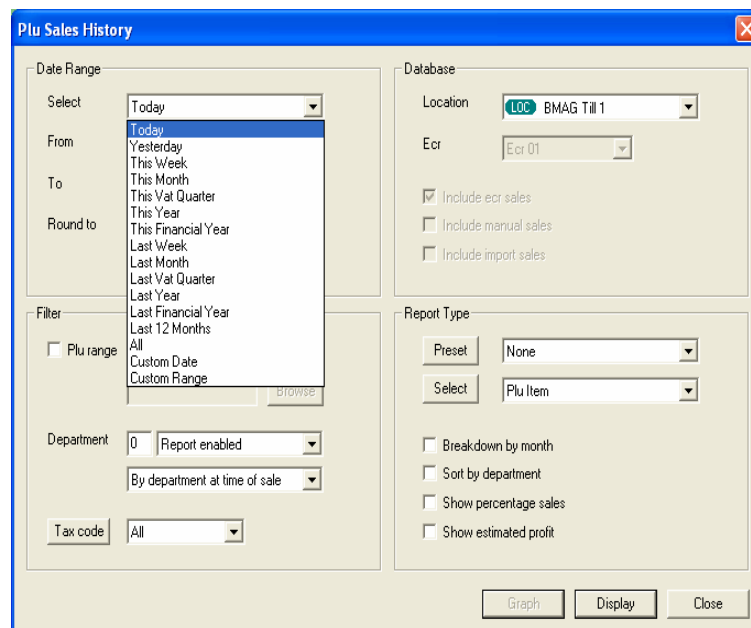


- Background scheduler runs independently of main program.
- Background scheduler supports simultaneous communication with multiple locations using one or more computers.
- Background scheduler can be configured to allow connections within a fixed daily time range and prevent connections at all other times.
- Background scheduler can be configured to start automatically when each computer is rebooted.
- Scheduled tasks are selected from a system-wide task library, making it easy to run the same task at different times or on different days.
- Multiple dialing modems can be configured for each PC.
- An expiry time in hours can be configured for each task.
- Automatic printing can be turned on or off on a job-by-job basis.
- Task location sets allow multiple jobs to be easily restricted to the same set of locations.

# POS Reporting Features



- Reports can be exported in CSV format.
- Comprehensive range of ecr reports.
- View sales by plu item, department or stock code.
- Reports can be consolidated by ecr, location or database.
- Report points can be created to consolidate ecrs from different locations.
- Batch printing option for ecr reports.
- Sales history report for plu and department sales within a date range.
- Plu sales history graphs.
- Apparent stock reports by plu and department.
- Preset configurations can be created for the Plu, Department and Stock sales history to save time when requesting reports.
- Plu and Stock sales history reports can be sorted by the department or category that the items are currently linked to or by the department or category at the time of sale.
- Stock database custom list report showing selected database fields and apparent stock level.
- Option to omit the page break after each report when printing results for the same Ecr job at different consolidation levels.

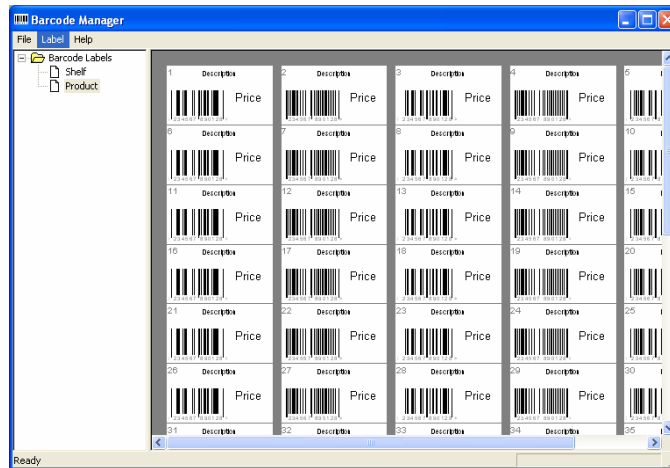


## POS Keyboard Editing



- Keyboard layouts can be uploaded, downloaded and copied between locations.
- Keyboard editing can be performed on the PC for most ecr models.
- Keyboard sheets can be printed out in colour.

## Label Printing



- Batch printing of shelf labels to match price and description changes for plu items.
- Comprehensive setup options to control how labels are printed.
- Barcode labels can be printed on an adhoc basis.
- The quantity of labels to print can be edited before printing.

## Other Features

- *Ecr Ram*: the entire contents of the ecr ram can be uploaded and downloaded.
- *Upload Settings*: configuration details (ie number of prices, text lengths) can be uploaded from the ecr to assist with communications.
- *Price Sets*: each database can have up to 3 different price sets, where a price set contains up to 7 levels of prices, aux prices, points, ecr texts and key texts. Each location is linked to one of the price sets so different locations on the same database can have different prices for each item.
- *Plu Download by Date*: plu records can be given a date before which downloads will not take place.
- *Plu Download by Location* : allows each location to be linked to a subset of records from the plu database.